

GLOBAL CATALOG · COMPACT DIGITAL EDITION

# A Bright Future.

LED lighting systems engineered for roadway, industrial, commercial, hazardous location, and outdoor solar applications.

ABOUT US

# Lighting Through Continuous Innovation.

Since 1989 we have manufactured LED systems for critical infrastructure. Every product leaving Carden is **tested, certified and dimensioned** for decades of continuous operation.

**36+**

YEARS OF OPERATION

**210**

CATALOGED SKUS

**12**

STRATEGIC WAREHOUSES

**24/7**

COMMERCIAL SUPPORT

C·A·R·D·E·N PILLARS

**C**

**Certified**

NOM, IES, DLC, IECEx and international certifications backing every product.

**A**

**Applied**

Solutions engineered for specific use cases: roadway, industrial, commercial, hazardous location.

**R**

**Reliable**

Documented and reproducible performance. Real lumens, lab-tested efficacy.

**D**

**Durable**

Materials, IP/IK and L70 service life engineered for decades of continuous operation.

**E**

**Engineered**

In-house engineering. Driver, optics and thermal management calculated for each family.

**N**

**Networked**

Connectivity, remote management and smart dimming ready to integrate.

NAVEGACIÓN

# Index by family & application.

Products organized in technical families, distributed from 12 strategic warehouses. Locate a specific SKU or explore the full family by application.

**Featured**

24 PRODUCTS · P. 6

CL S 11	11	CL BL 11	30
CL SPT 10	13	CL SPS 10	12
CL ST 8	17	CL EWD Q	38
CL HBU 10	21	CL SB 9	29
CL SPS 9S	12	CL HZ STA	41
CL S 8	11	CL PTB 8	19
CL FLS 10	26	CL HBU 11	21
CL HZ B	41	CL RTB 9	24
CL FL 9	26	CL HZ HB	41
CL SWP 11	14	CL FLS 8	26
CL WP 9	28	CL DL 6	34
CL HBL 10	22	CL EM 9	9

**Solar**

40 PRODUCTS · P. 10

CL S 11	11	CL SPT 6	13
CL S 10	11	CL SBL 11	13
CL S 9	11	CL SBL 10	13
CL S 8	11	CL SBL 9	13
CL S 7	11	CL SBL 8	14
CL S 6	11	CL SBL 7	14
CL S 5	11	CL SBL 6	14
CL S 1	11	CL SWP 11	14
CL SP 1	12	CL SWP 10	14
CL SPTB 9	12	CL SFL 9	14
CL SPS 11	12	CL SFL 6	14
CL SPS 10	12	CL SFL 3	14
CL SPS 9S	12	CL SFL 2	15
CL SPS 8C	12	CL SFL 1	15
CL SPS W	12	CL SWPR 8	15
CL SPT 11	12	CL SWPR 7	15
CL SPT 10	13	CL SWPR 6	15
CL SPT 9	13	CL SWPR 5	15
CL SPT 8	13	CL SWPR 4	15
CL SPT 7	13	CL SWPR 3	15

**Roadway**

23 PRODUCTS · P. 16

CL ST 11	17	CL PT 4	18
CL ST 10	17	CL PT 3	18
CL ST 9	17	CL PT 6	18
CL ST 8	17	CL PTT 9	18
CL ST 6	17	CL PTT 8	18
CL ST 5	17	CL PTT 7	19
CL ST 3	17	CL PTT 6	19
CL PT 11	17	CL PTB 9	19
CL PT 10	18	CL PTB 8	19
CL PT 9	18	CL PTB 7	19
CL PT 8	18	CL PTB 6	19
		CL PTB 5	19

**Industrial**

32 PRODUCTS · P. 20

CL HBU 11	21	CL LBC 9	23
CL HBU 10	21	CL LBC 8	23
CL HBU 9	21	CL LBC 6	23
CL HBU 8	21	CL LBC 5	23
CL HBU 2	21	CL LBC 4	23
CL HBU 1	21	CL LBL FG 9	23
CL HBUF 9	21	CL LBL 8	23
CL HBUF 8	21	CL LBL 7	23
CL HBL 10	22	CL RTB 9	24
CL HBL 9	22	CL RTB 8	24
CL HBL 8	22	CL RTB 7	24
CL HBL 7	22	CL RTT 9	24
CL HBL 6	22	CL LMU	24
CL HBL 5	22	CL LMT	24
CL HBL 4	22	CL LMS	24
CL LBU 9	22	CL LMH	24

NAVEGACIÓN (CONT.)

# Index by family & application.

## Outdoor

54 PRODUCTS · P. 25

CL FLS 10	26	CL WPR4	29
CL FLS 9	26	CL SB 9	29
CL FLS 8	26	CL SB 8	29
CL FLS 7	26	CL SB 7	29
CL FLS 6	26	CL SB 6	29
CL FL 9	26	CL BLEV	30
CL FL 8	26	CL BL 11	30
CL FL 7	26	CL BL 10	30
CL FL 6	27	CL BL 9	30
CL FL 5	27	CL BL 8	30
CL FL 4	27	CL BL 7	30
CL FL 3	27	CL BL 6	30
CL FL 2	27	CL BL 5	30
CL FL RGB 9	27	CL BL 4	31
CL FL RGB L 9	27	CL BL 3	31
CL FL RGB L 8	27	CL BL 2	31
CL WP 9	28	CL LS 9	31
CL WP 8	28	CL LS 8	31
CL WP 7	28	CL LSS 9	31
CL WP 6	28	CL LSS 8	31
CL WP 5	28	CL LSS 6	31
CL WP 4	28	CL LSL 9	32
CL WP 2	28	CL LSL 8	32
CL WPR 9	28	CL LSB 7	32
CL WPR9 C	29	CL LSB 6	32
CL WPR 8	29	CL LS SL 8	32
CL WPR 7	29	CL LS SL 9	32

## Commercial

46 PRODUCTS · P. 33

CL DL 10	34	CL PLF	36
CL DL 9	34	CL TRF 8	37
CL DL 8	34	CL TRF 6	37
CL DL 7	34	CL PLC 10	37
CL DL 6	34	CL PLC 9	37
CL DL 6X	34	CL PLC 8	37
CL DL 6XQ	34	CL AR 10	37
CL DL 5	34	CL AR 9	37
CL DL 4	35	CL AR 8	37
CL DL 3	35	CL EWD Q	38
CL DLC 9	35	CL EWD M	38
CL DLC 8	35	CL EWD L	38
CL DLC 7	35	CL EWD C	38
CL DLS 10	35	CL SL 9	38
CL DLS 9	35	CL SL 8	38
CL DLS 8	35	CL SL 7	38
CL DLS 7	36	CL SL 6	38
CL TL 9	36	CL SL 5	39
CL TL 8	36	CL SL 4	39
CL TL 7	36	CL TRP E	39
CL PL CR 11	36	CL TRP R	39
CL PL 11	36	CL TRP P	39
CL PL 9	36	CL TRP I	39

## Hazardous Locations

14 PRODUCTS · P. 40

CL HZ A	41	CL HZ STA	41
CL HZ HB	41	CL HZ ES 9	42
CL HZ B	41	CL HZ I	42
CL HZ H	41	CL HZ FLA	42
CL HZ G	41	CL HZ CPA	42
CL HZ FLC	41	CL HZ JB 8	42
CL HZ FL	41	CL HZ JB 9	42

## Emergency

8 PRODUCTS · P. 43

CLEM 10	44	CLEM 5	44
CLEM D 9	44	CLEM 4	44
CLEM 8	44	CLEM 3	44
CLEM 7	44	CLEM 2	44

CÓMO LEER ESTE CATÁLOGO

# Iconografía y badges técnicos.

Las etiquetas que encontrarás en cada ficha de producto y su significado técnico. Indispensable para interpretar correctamente las capacidades de cada SKU.

## Technical Capabilities

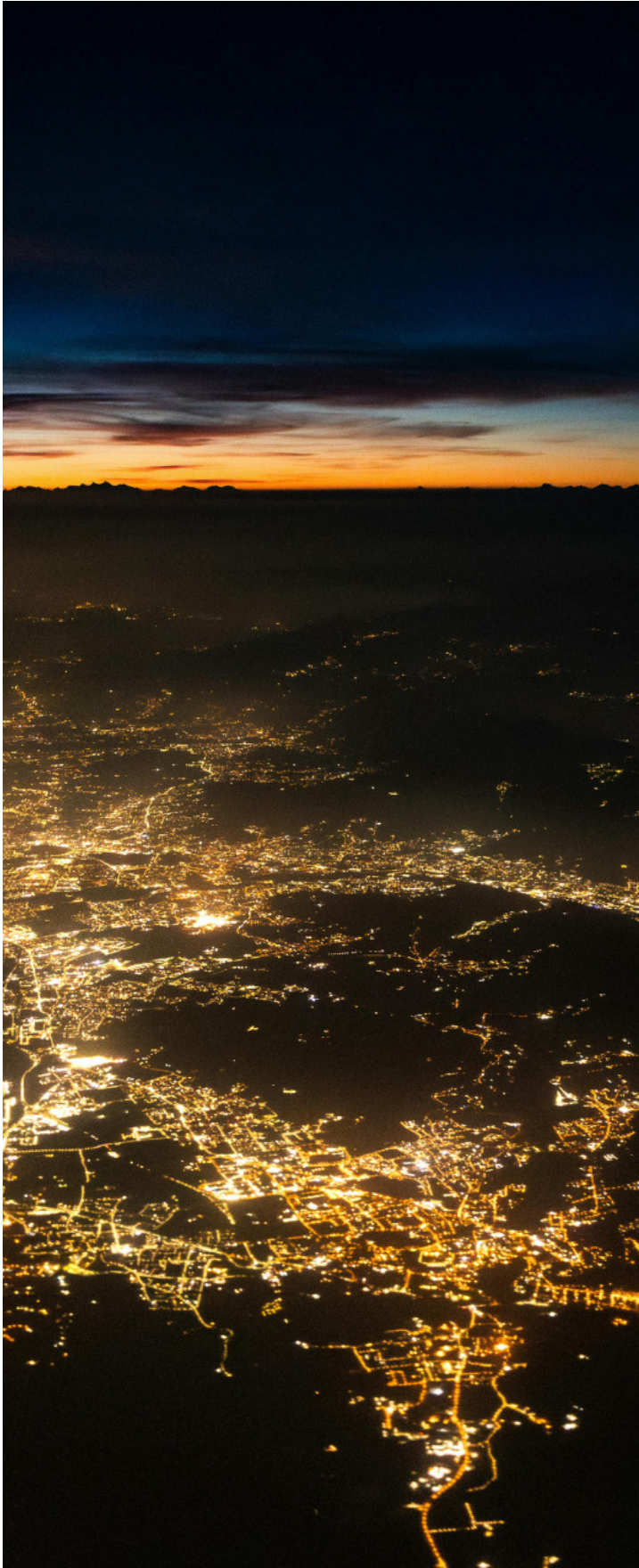
3CCT SWITCH	Manual color temperature selection on the fixture. Typically 3000K / 4000K / 5000K / 6500K.
WATTAGE SWITCH	Manual power selection to adjust consumption and output by application.
LM/W	Luminous efficacy: lumens generated per watt consumed.
DIMMABLE	Compatible with intensity regulation systems (0-10V, DALI, PWM or triac).
SMART CONTROL	Ready for integration into remote control and network monitoring systems.
SENSOR	Includes or supports motion, occupancy or daylight sensor.

## Protection & Resistance

IP65	Full dust tightness and resistance to water jets.
IP66	Full dust tightness and resistance to powerful water jets.
IP67	Full dust tightness and resistance to temporary immersion.
IK08	Mechanical impact resistance up to 5 joules.
IK10	Maximum impact resistance: up to 20 joules.
-40 / +50°C	Extended operating range: industrial thermal extremes.

## Certifications

NOM	Mexican Official Standard for electrical safety compliance.
UL	Underwriters Laboratories certification (North America).
DLC	Listada DesignLights Consortium (rebates EUA/Canadá).
IECEX	International certification for explosive atmospheres.
CE	Conformidad europea (EMC, seguridad eléctrica, RoHS).
FCC	Conformidad de emisiones electromagnéticas (EUA).



SECTION 01 · FEATURED

# Featured Selection.

The most representative products of the 2026 edition. Entry point to the catalog.

TECHNICAL SUBFAMILIES

# 24

Featured products  
selected from the 8 technical families



### CLS 11

170 LM/W



WATTAGE 60W - 180W

LUMENS 10800 - 32400 lm

OPTICS T2



### CL SPT 10

220 LM/W

WATTAGE 40W - 100W

LUMENS 8800 - 22000 lm

OPTICS T5



### CLST 8

230 LM/W

WATTAGE 40W - 200W

LUMENS 9200 - 46000 lm

OPTICS T2



### CL HBU 10

170 LM/W



WATTAGE 100 - 240 W

LUMENS 17000 - 40800 lm

OPTICS 90°



### CL SPS 9S

WATTAGE 60 W

LUMENS 10800 lm

HEIGHT 6 / 8 / 10 m

ACCESSORIES CCTV · USB



### CLS 8

220 LM/W

WATTAGE 20W - 200W

LUMENS 4400 - 44000 lm

OPTICS T2



### CLFLS 10

160 LM/W



WATTAGE 300W - 1200W

LUMENS 48000 - 192000 lm

OPTICS 30°/45°/60°



### CLHZB

140 LM/W



WATTAGE 20W - 200W

LUMENS 3023 - 28000 lm

OPTICS 40°/60°/90°/120°



### CL FL 9

140 LM/W

WATTAGE	300W - 1500W
LUMENS	42 000 - 210 000 lm
OPTICS	15° / 30° / 60° / 90°



### CL SWP 11

170 LM/W

WATTAGE	5W - 10W
LUMENS	850 - 1700 lm
OPTICS	T2 / T4



### CL WP 9

150 LM/W

WATTAGE	40W - 120W
LUMENS	6000 - 18000 lm
OPTICS	T3



### CL HBL 10

170 LM/W

WATTAGE	90 - 420 W
LUMENS	15300 - 72000 lm
OPTICS	90°



### CL BL 11

140 LM/W

WATTAGE	14W - 24W
LUMENS	1600 - 3300 lm
OPTICS	T5



### CL SPS 10

WATTAGE	80 W
LUMENS	14400 lm
HEIGHT	6 / 8 / 10 m
ACCESSORIES	CCTV · ENV · USB · WIFI



### CLEWD Q

LUX	3000 lux / 3m
CCT	2500-10000K
OPTICS	90°
DIMENSIONS	1170 x 1170 mm



### CL SB 9

160 LM/W

WATTAGE	60W - 300W
LUMENS	24000 - 76000 lm
OPTICS	T2 / T3 / T4 (T5 optional)





### CL HZ STA

140 LM/W



WATTAGE	20W - 200W
LUMENS	3023 - 28000 lm
OPTICS	40°/60°/90°/120°



### CL PTB 8

115 LM/W

WATTAGE	2xT816W - 35W
LUMENS	2344- 4000 lm
OPTICS	180°



### CL HBU 11

170 LM/W



WATTAGE	100 - 240 W
LUMENS	17000 - 40800 lm
OPTICS	90°



### CL RTB 9

190 LM/W



WATTAGE	30W - 120W
LUMENS	5700 - 22800 lm
OPTICS	310°



### CL HZ HB

140 LM/W



WATTAGE	80W - 300W
LUMENS	19000 - 38000 lm
OPTICS	T3 Opcional T2, T4 y T5



### CL FLS 8

150 LM/W



WATTAGE	200W - 1800W
LUMENS	45000 - 270000 lm
OPTICS	120°



### CL DL 6

110 LM/W

WATTAGE	15W - 30W
LUMENS	1650 - 3 300 lm
OPTICS	90° / 120°



### CLEM 9

LEGEND	EXIT
VOLTAGE	120-277VAC
BACKUP TIME	90 MINUTES
WATTAGE	2W



SECTION 02 · SOLAR

# Solar Lighting.

Integrated photovoltaic systems. Off-grid nighttime operation for roadway, perimeter and remote applications.

TECHNICAL SUBFAMILIES

<b>S</b>	<b>Streetlight</b> Roadways, avenues	40
<b>SBL</b>	<b>Bollard</b> Pedestrian, parks	6
<b>SPT</b>	<b>Pole-top</b> Plazas, walkways	7
<b>SFL</b>	<b>Floodlight</b> Perimeter, sports	5
<b>SWP</b>	<b>Wall Pack</b> Facades, walls	8
<b>SWPR</b>	<b>Wall Pack Round</b> Garden, pedestrian	6
<b>SPS</b>	<b>Smart Pole</b> IoT + CCTV + EV charge	5
<b>SPTB</b>	<b>Pole-top Bracket</b> Vertical sand-zone	1



### CLS11

170 LM/W



WATTAGE 60W - 180W

LUMENS 10800 - 32400 lm

OPTICS T2



### CLS10

180 LM/W



WATTAGE 60W - 180W

LUMENS 10800 - 32400 lm

OPTICS T2



### CLS9

140 LM/W

WATTAGE 80W - 150W

LUMENS 11200 - 21000 lm

OPTICS T3 / T4



### CLS8

220 LM/W

WATTAGE 20W - 200W

LUMENS 4400 - 44000 lm

OPTICS T2



### CLS7

180 LM/W

WATTAGE 40W - 150W

LUMENS 7200 - 27000 lm

OPTICS T2



### CLS6

165 LM/W

WATTAGE 20W - 120W

LUMENS 4000 - 24000 lm

OPTICS T2



### CLS5

220 LM/W

WATTAGE 20W - 50W

LUMENS 4400 - 11000 lm

OPTICS T2



### CLS1

100 LM/W

WATTAGE 20W - 250W

LUMENS 2000 - 25000 lm

OPTICS T2



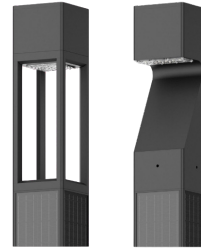
### CLSP1

150 LM/W

WATTAGE 30W - 150W

LUMENS 4500 - 22500 lm

OPTICS T2



### CLSPTB9

190 LM/W

WATTAGE 25 - 38 W

LUMENS 4500 - 7200 lm

HEIGHT 2.8 / 3.6 m

OPTICS 360°



### CLSPS11

WATTAGE 100 W

LUMENS 18000 lm

HEIGHT 8 / 10 m

ACCESSORIES CCTV · EV CHARGE · WIFI



### CLSPS10

WATTAGE 80 W

LUMENS 14400 lm

HEIGHT 6 / 8 / 10 m

ACCESSORIES CCTV · ENV · USB · WIFI



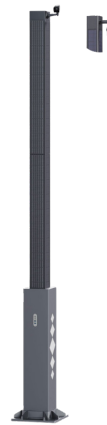
### CLSPS9S

WATTAGE 60 W

LUMENS 10800 lm

HEIGHT 6 / 8 / 10 m

ACCESSORIES CCTV · USB



### CLSPS8C

WATTAGE 40 W

LUMENS 7200 lm

HEIGHT 4 - 6 m

ACCESSORIES CCTV



### CLSPS W

WATTAGE 30 W

LUMENS 5400 lm

HEIGHT WALL MOUNT

ACCESSORIES CCTV · USB



### CLSPT11

170 LM/W

WATTAGE 80W - 100W

LUMENS 13600 - 17000 lm

OPTICS 60° / 90° / 150° / T3-S / T2





**CL SPT 10**

220 LM/W

WATTAGE 40W - 100W

LUMENS 8800 - 22000 lm

OPTICS T5



**CL SPT 9**

210 LM/W

WATTAGE 40W - 60W

LUMENS 8400 - 12600 lm

OPTICS T5



**CL SPT 8**

180 LM/W

WATTAGE 40W - 60W

LUMENS 7200 - 10800 lm

OPTICS T5



**CL SPT 7**

170 LM/W

WATTAGE 10W - 20W

LUMENS 1700 - 3400 lm

OPTICS T5



**CL SPT 6**

115 LM/W

WATTAGE 20W

LUMENS 2300 lm

OPTICS T5



**CL SBL 11**

170 LM/W

WATTAGE 5W - 12W

LUMENS 1080 - 2280 lm

OPTICS T4



**CL SBL 10**

130 LM/W

WATTAGE 3W

LUMENS 420 lm

OPTICS T3 / T4 / T5



**CL SBL 9**

170 LM/W

WATTAGE 4W

LUMENS 680 lm

OPTICS T5



### CL SBL 8

233 LM/W

WATTAGE 1.2W

LUMENS 280 lm

OPTICS T5



### CL SBL 7

185 LM/W

WATTAGE 1.5 W

LUMENS 280 lm

OPTICS T5



### CL SBL 6

185 LM/W

WATTAGE 1.5 W

LUMENS 280 lm

OPTICS T5



### CL SWP 11

170 LM/W

WATTAGE 5W - 10W

LUMENS 850 - 1700 lm

OPTICS T2 / T4



### CL SWP 10

165 LM/W

WATTAGE 1.5 W

LUMENS 280 lm

OPTICS T5



### CL SFL 9

165 LM/W

WATTAGE 50W

LUMENS 8250 lm

OPTICS 30° / 60° / 90°



### CL SFL 6

165 LM/W

WATTAGE 10W - 60W

LUMENS 1500 - 9600 lm

OPTICS 120°\*60°



### CL SFL 3

165 LM/W

WATTAGE 10W - 60W

LUMENS 1500 - 9600 lm

OPTICS 120°\*60°



### CL SFL 2

150-160 LM/W

WATTAGE 10W - 60W

LUMENS 1,500 - 9,600 lumens

OPTICS 120° · 60°



### CL SFL 1

165 LM/W

WATTAGE 10W - 60W

LUMENS 1500 - 9600 lm

OPTICS 120°\*60°



### CL SWPR 8

128 LM/W

WATTAGE 7W

LUMENS 900 lm

OPTICS 120°



### CL SWPR 7

119 LM/W

WATTAGE 8W

LUMENS 950 lm

OPTICS 120°



### CL SWPR 6

150 LM/W

WATTAGE 6W

LUMENS 900 lm

OPTICS 140° \* 70°



### CL SWPR 5

130 LM/W

WATTAGE 15W

LUMENS 2000 lm

OPTICS 120°



### CL SWPR 4

120 LM/W

WATTAGE 2.5W

LUMENS 300 lm

OPTICS 120° x 60°



### CL SWPR 3

140 LM/W

WATTAGE 8W

LUMENS 850 lm

OPTICS 90°



SECTION 03 · ROADWAY

# Roadway Lighting.

Fixtures for arteries, streets, avenues and secondary roads. NOM and municipal compliance.

TECHNICAL SUBFAMILIES

<b>ST</b>	<b>Streetlight</b> Avenues and roadways	7
<b>PT</b>	<b>Pole-top</b> Urban streets	16
<b>PTT</b>	<b>Pole-top T-frame</b> Parks and walkways	4
<b>PTB</b>	<b>Pole-top Bracket</b> Secondary streets	5



### CLST 11

180 LM/W

WATTAGE 20W - 300W

LUMENS 3600 - 54000 lm

OPTICS T3 / T2 / T4 / T5



### CLST 10

140 LM/W

WATTAGE 80W - 300W

LUMENS 11200 - 42000 lm

OPTICS T3 / T2 / T4 / T5



### CLST 9

220 LM/W

WATTAGE 30W - 240W

LUMENS 6600 - 52800 lm

OPTICS T2 / T3 / T4 / T5



### CLST 8

230 LM/W

WATTAGE 40W - 200W

LUMENS 9200 - 46000 lm

OPTICS T2



### CLST 6

170 LM/W

WATTAGE 50W - 300W

LUMENS 8,500 - 51,000 lumens

OPTICS 75° / 140° (T-II/III/IV)



### CLST 5

170 LM/W

WATTAGE 10W - 200W

LUMENS 1700 - 34000 lm

OPTICS T2 / T3



### CLST 3

160 LM/W

WATTAGE 30W - 200W

LUMENS 4800 - 3200 lm

OPTICS T2



### CLPT 11

135 LM/W

WATTAGE 40W - 150W

LUMENS 5400 - 20250 lm

OPTICS T3 / T4 / T5





### CLPT 10

150 LM/W



WATTAGE 40W - 150W

LUMENS 6000 - 22500 lm

OPTICS T3 / T4 / T5



### CLPT 9

120 LM/W



WATTAGE 40W - 100W

LUMENS 4800 - 12000 lm

OPTICS T3 / T4 / T5



### CLPT 8

130 LM/W



WATTAGE 40W - 100W

LUMENS 5200 - 13000 lm

OPTICS T3 / T4 / T5



### CLPT 4

125 LM/W

WATTAGE 40W - 100W

LUMENS 4800 - 12000 lm

OPTICS T5



### CLPT 3

120 LM/W

WATTAGE 50W - 100W

LUMENS 5500 - 11000 lm

OPTICS T5



### CLPT 6

140 LM/W

WATTAGE 40W - 100W

LUMENS 5600 - 10500 lm

OPTICS T3 / T4 / T5



### CLPTT 9

110 LM/W

WATTAGE 20W - 80W

LUMENS 2420 - 9160 lm

OPTICS T3 / T4 / T5



### CLPTT 8

130 LM/W

WATTAGE 40W - 100W

LUMENS 5200 - 13000 lm

OPTICS T5



### CLPTT 7

120 LM/W

WATTAGE 30W - 100W

LUMENS 3600 - 12000 lm

OPTICS 90°



### CLPTT 6

130 LM/W

WATTAGE 30W - 65W

LUMENS 3600 - 12000 lm

OPTICS T5



### CLPTB 9

80 LM/W

WATTAGE 30W - 50W

LUMENS 2400- 4000 lm

OPTICS 180°



### CLPTB 8

115 LM/W

WATTAGE 2xT816W - 35W

LUMENS 2344- 4000 lm

OPTICS 180°



### CLPTB 7

100 LM/W

WATTAGE 30W - 60W

LUMENS 3000- 4000 lm

OPTICS 110°



### CLPTB 6

90 LM/W

WATTAGE 30W - 45W

LUMENS 2600- 4000 lm

OPTICS 180°



### CLPTB 5

95 LM/W

WATTAGE 35W - 45W

LUMENS 3000- 4000 lm

OPTICS 180°



SECTION 04 · INDUSTRIAL

# High-Bay Industrial.

High-bay lighting for warehouses and industrial process areas. Designed for uptime and MTBF.

TECHNICAL SUBFAMILIES

<b>HBU</b>	<b>High-bay Universal</b> Warehouses and process plants	8
<b>HBUF</b>	<b>High-bay Fan</b> Active ventilation	2
<b>HBL</b>	<b>High-bay Linear</b> Process lines	7
<b>LBU</b>	<b>Low-bay Universal</b> Low ceilings	1
<b>LBL</b>	<b>Low-bay Linear</b> Workshops and offices	3
<b>LBC</b>	<b>Low-bay Compact</b> Shelving and aisles	5
<b>RTB/RTT</b>	<b>Retrofit</b> Tubular replacement	4
<b>LM</b>	<b>Linear Module</b> Suspended / track	4



### CL HBU 11

170 LM/W



WATTAGE 100 - 240 W

LUMENS 17000 - 40800 lm

OPTICS 90°



### CL HBU 10

170 LM/W



WATTAGE 100 - 240 W

LUMENS 17000 - 40800 lm

OPTICS 90°



### CL HBU 9

140 LM/W



WATTAGE 100W - 240W

LUMENS 14 000 - 33 600 lm

OPTICS 60° / 90°



### CL HBU 8

180 LM/W



WATTAGE 60 - 240 W

LUMENS 10200 - 41000 lm

OPTICS 60° · 90° · 120°



### CL HBU 2

110 LM/W

WATTAGE 100 - 200 W

LUMENS 11000 - 22000 lm

OPTICS 90°



### CL HBU 1

110 LM/W

WATTAGE 100 - 200 W

LUMENS 11000 - 22000 lm

OPTICS 90°



### CL HBUF 9

150 LM/W



WATTAGE 100W - 200W

LUMENS 14600 - 29200 lm

OPTICS 120°



### CL HBUF 8

150 LM/W

WATTAGE 100W - 200W

LUMENS 15000 - 30000 lm

OPTICS 60° / 90° / 120°





### CL HBL 10

170 LM/W



WATTAGE 90 - 420 W

LUMENS 15300 - 72000 lm

OPTICS 90°



### CL HBL 8

140 LM/W

WATTAGE 100 - 400 W

LUMENS 14000 - 56000 lm

OPTICS 60\*120°



### CL HBL 9

150 LM/W



WATTAGE 90 - 400 W

LUMENS 5400 - 60000 lm

OPTICS 90°



### CL HBL 7

160 LM/W

WATTAGE 50 - 200 W

LUMENS 17000 - 34000 lm

OPTICS 30\*70° / 50\*90° / 120° / 4C



### CL HBL 6

170 LM/W

WATTAGE 50 - 200 W

LUMENS 17000 - 34000 lm

OPTICS 30\*70° / 50\*90° / 120° / 4C



### CL HBL 5

170 LM/W

WATTAGE 50 - 200 W

LUMENS 17000 - 34000 lm

OPTICS 30\*70° / 50\*90° / 120° / 4C



### CL HBL 4

130 LM/W

WATTAGE 50 - 200 W

LUMENS 6500 - 2600 lm

OPTICS 60\*110°



### CL LBU 9

155 LM/W

WATTAGE 36W - 60W

LUMENS 5580 - 9300 lm

OPTICS 90°





### CL LBC 9

140 LM/W



WATTAGE	100W - 240W
LUMENS	14000 - 33600 lm
OPTICS	120°



### CL LBC 8

165 LM/W



WATTAGE	100W - 200W
LUMENS	16500 - 39600 lm
OPTICS	120°



### CL LBC 6

150 LM/W



WATTAGE	20W - 80W
LUMENS	3000 - 12000 lm
OPTICS	135° / 145°+



### CL LBC 5

150 LM/W



WATTAGE	20W - 80W
LUMENS	3000 - 12000 lm
OPTICS	135° / 145°+



### CL LBC 4

135 LM/W



WATTAGE	40W - 80W
LUMENS	5400 - 10,125 lm
OPTICS	120°



### CL LBL FG 9

160 LM/W



WATTAGE	10W - 50W
LUMENS	1600 - 8000 lm
DIMENSIONS	2FT / 4FT / 5FT



### CL LBL 8

160 LM/W



WATTAGE	10W - 50W
LUMENS	1600 - 8000 lm
OPTICS	180



### CL LBL 7

200 LM/W



WATTAGE	9W - 50W
LUMENS	1800 - 10000 lm
DIMENSIONS	2FT / 4FT / 5FT





### CLRTB 9

190 LM/W

WATTAGE 30W - 120W

LUMENS 5700 - 22800 lm

OPTICS 310°



### CLRTB 8

160 LM/W

WATTAGE 30W - 120W

LUMENS 4800 - 19200 lm

OPTICS 90° / 120°



### CLRTB 7

130 LM/W

WATTAGE 65W - 150W

LUMENS 8450 - 19500 lm

OPTICS 120°



### CLRTT 9

200 LM/W

WATTAGE 6W - 18W

LUMENS 1200 - 3600 lm

OPTICS 170°



### CLLMU

150 LM/W

WATTAGE 30W - 120W

LUMENS 4500 - 18000 lm

OPTICS 60° / 120° / 120° Up-Light



### CLLMT

180 LM/W

WATTAGE 18W - 60W

LUMENS 3000 - 10800 lm

OPTICS 30° / 60° / 90° / 120° / DS /



### CLLMS

180 LM/W

WATTAGE 30W - 120W

LUMENS 5400 - 21600 lm

OPTICS 30° / 60° / 90° / 120° / DS /



### CLLMH

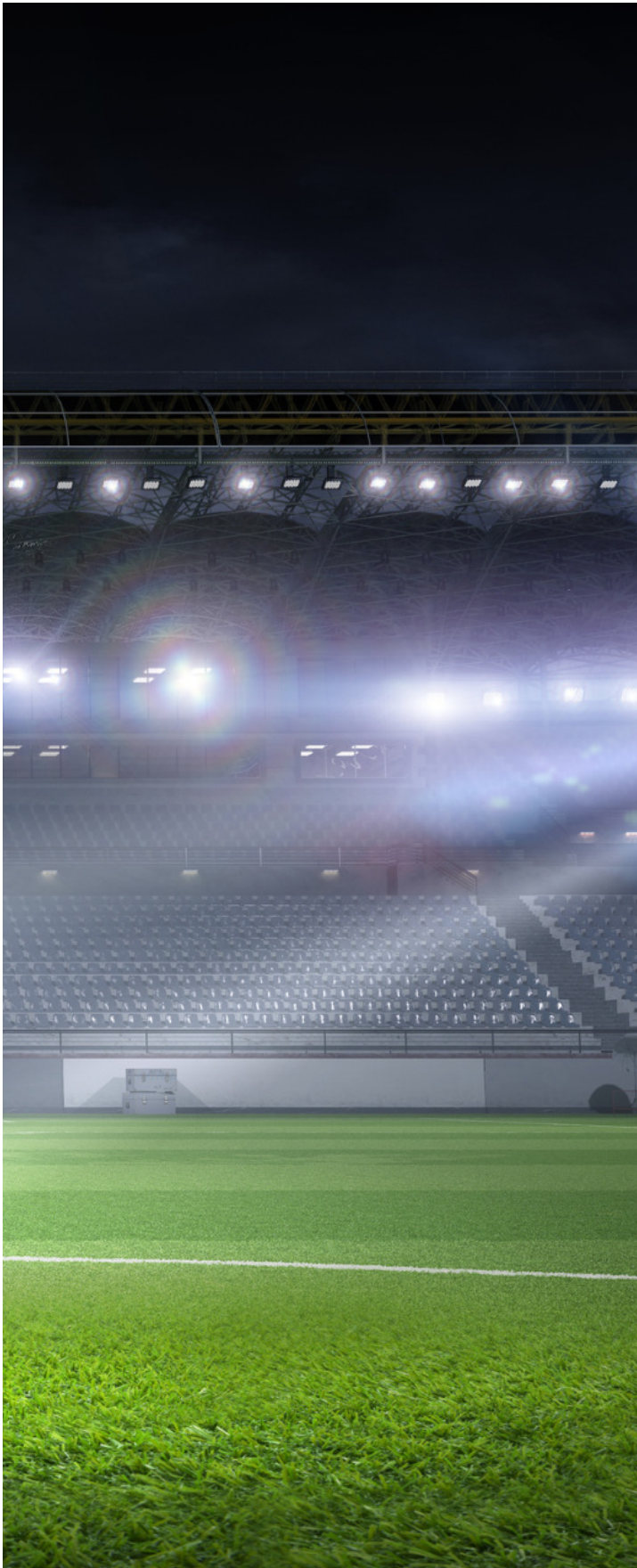
140 LM/W

WATTAGE 35W

LUMENS 4970 lm

OPTICS 30° / 60° / 90° / 120° / DS /





SECTION 05 · OUTDOOR

# Outdoor Floods.

Floodlights, projectors and facade fixtures for outdoor, sports and perimeter security use.

TECHNICAL SUBFAMILIES

<b>FLS / FL</b>	<b>Floodlight</b> Court and perimeter	16
<b>WP / WPR</b>	<b>Wall Pack</b> Facades and walls	12
<b>SB</b>	<b>Streetscape</b> Urban hardscape	4
<b>BL</b>	<b>Bollard</b> Pedestrian	11
<b>LS / LSS / LSB</b>	<b>Linear Strip</b> Architectural linears	11
<b>LSSL / LSL</b>	<b>Linear Special</b> Special variants	4



### CLFLS 10

160 LM/W

WATTAGE 300W - 1200W

LUMENS 48000 - 192000 lm

OPTICS 30°/45°/60°



### CLFLS 8

150 LM/W

WATTAGE 200W - 1800W

LUMENS 45000 - 270000 lm

OPTICS 120°



### CLFLS 9

150 LM/W

WATTAGE 400W - 1300W

LUMENS 60,000 - 95,000 lm

OPTICS 25°/40°/60°



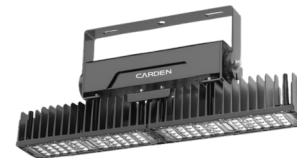
### CLFLS 6

165 LM/W

WATTAGE 50W - 100W

LUMENS 8,250 - 16500 lm

OPTICS A60°



### CLFL 9

140 LM/W

WATTAGE 300W - 1500W

LUMENS 42 000 - 210 000 lm

OPTICS 15° / 30° / 60° / 90°



### CLFL 8

150 LM/W

WATTAGE 180W - 600W

LUMENS 27,000 - 90,000 lumens

OPTICS T2 / T3 / T4 / T5



### CLFL 7

150 LM/W

WATTAGE 180W - 600W

LUMENS 27,000 - 90,000 lumens

OPTICS T2 / T3 / T4 / T5





### CL FL 6

150 LM/W



WATTAGE 20W - 180W

LUMENS 3000 - 27000 lm

OPTICS 7H6V



### CL FL 5

130 LM/W



WATTAGE 20W - 180W

LUMENS 1950 - 19500 lm

OPTICS 7H6V - 7H7V



### CL FL 4

130 LM/W

WATTAGE 50W - 600W

LUMENS 6500 - 78000

OPTICS 30° / 60° / 90°



### CL FL 3

165 LM/W

WATTAGE 50W - 400W

LUMENS 7000 - 56000

OPTICS 30° · 60° · 90°



### CL FL 2

100 LM/W

WATTAGE 10W - 200W

LUMENS 1000 - 20000 lumens

OPTICS 90°



### CL FL RGB 9

100 LM/W

WATTAGE 100W - 300W

LUMENS 7,000 - 30,000 lumens

OPTICS 3° / 8° / 12° / 30° / 75°



### CL FL RGB L 9

100 LM/W

WATTAGE 65W / 130W

LUMENS 5,850 - 13,000 lumens

OPTICS 12° / 25° / 60° / 75°



### CL FL RGB L 8

100 LM/W

WATTAGE 18W / 36W

LUMENS 1,620 - 3,600 lumens

OPTICS 12° / 25° / 60° / 75°





### CLWP9

150 LM/W

WATTAGE 40W - 120W

LUMENS 6000 - 18000 lm

OPTICS T3



### CLWP8

150 LM/W

WATTAGE 40W - 120W

LUMENS 6000 - 18000 lm

OPTICS T3



### CLWP7

150 LM/W

WATTAGE 40W - 150W

LUMENS 6000 - 22500 lm

OPTICS T4



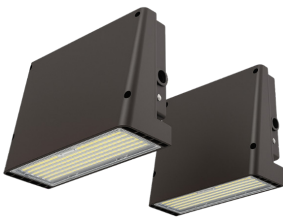
### CLWP6

125 LM/W

WATTAGE 40W - 185W

LUMENS 5000 - 12500 lm

OPTICS 120°



### CLWP5

150 LM/W

WATTAGE 40W - 100W

LUMENS 6000 - 15000 lm

OPTICS T3



### CLWP4

150 LM/W

WATTAGE 40W - 120W

LUMENS 6000 - 18000

OPTICS T3



### CLWP2

WATTAGE 22W / 36W

DIMENSIONS Ø210 / Ø310 mm



### CLWPR9

130 LM/W

WATTAGE 20W - 40W

LUMENS 2400 - 4800 lm

OPTICS 15° / 30° / 60°



### CLWPR9C



WATTAGE	6W - 12W
VERSION	Down / Up & Down
OPTICS	Directional



### CLWPR8

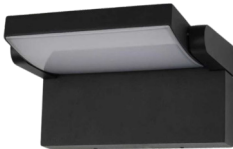
110 LM/W



WATTAGE	20W - 40W
LUMENS	2200 - 4400 lumens
OPTICS	120°

### CLWPR7

150 LM/W



WATTAGE	12.5W
LUMENS	750 lm
OPTICS	110°

### CLWPR4

95-110 LM/W



WATTAGE	20W - 26W
LUMENS	2,100 - 2,860 lumens
OPTICS	100



### CLSB9

160 LM/W



WATTAGE	60W - 300W
LUMENS	24000 - 76000 lm
OPTICS	T2 / T3 / T4 (T5 optional)



### CLSB8

140 LM/W



WATTAGE	60W - 120W
LUMENS	8 400 - 16 800 lm
OPTICS	T3 / T4 / T5



### CLSB7

150 LM/W



WATTAGE	60W - 300W
LUMENS	9000 - 45000 lm
OPTICS	T2 / T3 / T4 / T5

### CLSB6

140 LM/W



WATTAGE	80W - 300W
LUMENS	11200 - 44000 lm
OPTICS	T2 / T3 / T4 / T5





**CL BLEV**

145 LM/W

WATTAGE 15W - 30W

LUMENS 2175 - 4350 lm

OPTICS T3



**CL BL 11**

140 LM/W

WATTAGE 14W - 24W

LUMENS 1600 - 3300 lm

OPTICS T5



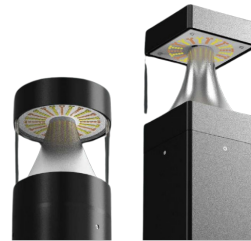
**CL BL 10**

110 LM/W

WATTAGE 12W - 24W

LUMENS 1320 - 2640 lm

OPTICS T5



**CL BL 9**

140 LM/W

WATTAGE 14W - 24W

LUMENS 1960 - 3360 lm

OPTICS T3



**CL BL 8**

85 LM/W

WATTAGE 12W - 24W

LUMENS 1190 - 1920 lm

OPTICS T4 / T4S / T5



**CL BL 7**

100 LM/W

WATTAGE 15W - 25W

LUMENS 1500 - 2590 lm

OPTICS T4 / T5



**CL BL 6**

130 LM/W

WATTAGE 14W - 25W

LUMENS 1820 - 3250 lm

OPTICS T4 / T4S / T5



**CL BL 5**

165 LM/W

WATTAGE 7W

LUMENS 1155 lm

OPTICS TBA



**CL BL 4**

45 LM/W

WATTAGE 10W - 30W

LUMENS 447- 999 lm

OPTICS 180°



**CL BL 3**

45 LM/W

WATTAGE 10W - 30W

LUMENS 462- 1350 lm

OPTICS 180°



**CL BL 2**

130 LM/W

WATTAGE 10W

LUMENS 686 lm

OPTICS 180°



**CLLS 9**

90 LM/W

WATTAGE 10W - 18W

LUMENS 887 lm

OPTICS 15° / 24° / 36° / 60°



**CLLS 8**

90 LM/W

WATTAGE 10W - 18W

LUMENS 887 lm

OPTICS 15° / 24° / 36° / 60°



**CLLSS 9**

90 LM/W

WATTAGE 10W - 18W

LUMENS 887 - 1620 lm

OPTICS 15° / 24° / 36° / 60° / P25



**CLLSS 8**

90 LM/W

WATTAGE 3W - 5W

LUMENS 270 - 450 lm

OPTICS 15° / 24° / 36° / 60°



**CLLSS 6**

90 LM/W

WATTAGE 3W - 5W

LUMENS 270 - 450 lm

OPTICS 15° / 24° / 36° / 60°



### CLLSL 9

45 LM/W

WATTAGE	5W - 18W
LUMENS	222
OPTICS	15° / 30° / 45° / 60°



### CLLSL 8

45 LM/W

WATTAGE	5W - 18W
LUMENS	222
OPTICS	15° / 30° / 45° / 60°



### CLLSB 7

60 LM/W

WATTAGE	6W - 36W
LUMENS	365 - 1629 lm
OPTICS	15° / 30° / 45° / 60°



### CLLSB 6

140 LM/W

WATTAGE	4W - 16W
LUMENS	185 - 630 lm
OPTICS	15° / 30° / 45° / 60°



### CLLSSL 8

WATTAGE	1W - 3W DC24V
LUMENS	—
DIMENSIONS	Ø42 - Ø73 MM



### CLLSSL 9

WATTAGE	1W - 3W DC24V
LUMENS	—
DIMENSIONS	Ø42 - Ø73 MM



SECTION 06 · COMMERCIAL

# Commercial Lighting.

Downlights, panel lights and decorative fixtures for retail, office and indoor public spaces.

TECHNICAL SUBFAMILIES

<b>DL / DLC / DLS</b>	<b>Downlight</b> Recessed office/retail	17
<b>TL</b>	<b>Track Light</b> Track and aimable spot	3
<b>PL / PLF / PLC</b>	<b>Panel Light</b> Rectangular and compact ceiling	7
<b>AR</b>	<b>Architectural</b> Decorative	3
<b>EWD</b>	<b>Edge Window Display</b> Sky-ceiling tunable	4
<b>SL</b>	<b>Strip Light</b> Indoor linear runs	6
<b>TRP</b>	<b>Track Pendant</b> Pendant with track	4

### CL DL 10

110 LM/W



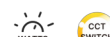
WATTAGE	10W - 40W
LUMENS	1422 lumens
OPTICS	110°
CUTOUT Ø	Ø80 mm - Ø175mm

### CL DL 9

130 LM/W



WATTAGE	8W - 40W
LUMENS	960 - 5200 lm
OPTICS	80°
CUTOUT Ø	Ø90 mm - Ø260 mm



### CL DL 8

125 LM/W



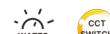
WATTAGE	10W - 30W
LUMENS	960 - 3760 lm
OPTICS	110°
CUTOUT Ø	Ø110 mm - Ø218mm

### CL DL 7

100 LM/W



WATTAGE	15W - 32W
LUMENS	1500 - 3200 lm
OPTICS	100°
CUTOUT Ø	Ø125mm - Ø200mm



### CL DL 6

110 LM/W



WATTAGE	15W - 30W
LUMENS	1650 - 3 300 lm
OPTICS	90° / 120°



### CL DL 6X

83 LM/W



WATTAGE	2X15W - 2X20W
LUMENS	1900 - 3,320 lm
OPTICS	15° / 24° / 36° / 45°

### CL DL 6XQ

83 LM/W



WATTAGE	2X15W - 2X20W
LUMENS	1900 - 3,320 lm
OPTICS	15° / 24° / 36° / 45°

### CL DL 5

100 LM/W



WATTAGE	10W - 40W
LUMENS	850 - 4240 lm
OPTICS	45° / 60°
CUTOUT Ø	Ø80 mm - Ø175mm



### CLDL4

83 LM/W

WATTAGE	30W - 42W
LUMENS	2490 - 3486 lm
OPTICS	18° / 25° / 40° / 65°
CUTOUT Ø	Ø125 mm - Ø150mm



### CLDL3

90 LM/W

WATTAGE	32W
LUMENS	2900 lm
OPTICS	120°
CUTOUT Ø	Ø27.5 - 28.5cm



### CLDLC9

90 LM/W

WATTAGE	20W - 40W
LUMENS	1800 - 3600 lm
OPTICS	18° / 25° / 40° / 65°



### CLDLC8

100 LM/W

WATTAGE	10W - 50W
LUMENS	1000 - 5000 lm
OPTICS	40°



### CLDLC7

100 LM/W

WATTAGE	10W - 50W
LUMENS	1000 - 5000 lm
OPTICS	40°



### CLDLS10

125 LM/W

WATTAGE	5W - 8W
LUMENS	1000 lm
OPTICS	90°



### CLDLS9

125 LM/W

WATTAGE	5W - 8W
LUMENS	1000 lm
OPTICS	90°



### CLDLS8

100 LM/W

WATTAGE	5W - 7W
LUMENS	700 lm
OPTICS	90°





### CL DLS 7

100 LM/W

WATTAGE 5W - 8W

LUMENS 800 lm

OPTICS 90°



### CL TL 8

70 LM/W

WATTAGE 3W - 7W

LUMENS 210 - 490 lm

OPTICS 8° - 50°



### CL TL 9

70 LM/W

WATTAGE 3W - 7W

LUMENS 210 - 490 lm

OPTICS 8° ~ 50°

CUTOUT Ø Ø35 mm



### CL TL 7

100 LM/W

WATTAGE 10 - 34 W

LUMENS 1000 - 3400 lm

OPTICS 24°

DIMENSIONS Ø60-70 mm



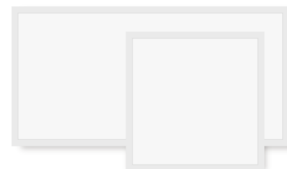
### CL PL CR 11

125 LM/W

WATTAGE 60W - 100W

LUMENS 250 - 12500 lumens

OPTICS 120°



### CL PL 11

153 LM/W

WATTAGE 40W - 72W

LUMENS 250 - 9000 lumens

OPTICS 120°



### CL PL 9

140 LM/W

WATTAGE 20W - 40W

LUMENS 4000 lm

OPTICS 110°



### CL PL F

100 LM/W

WATTAGE 20W - 40W

LUMENS 2000 - 4000 lm

OPTICS 110°



### CL TRF 8



125-130 LM/W

WATTAGE 40W - 72W

LUMENS 3,843 - 9,000 lumens

OPTICS 120°



### CL PLC 10

120 LM/W

WATTAGE 24W - 46W

LUMENS 2,880 - 5,520 lumens

OPTICS Difusión prismática plana, s



### CL TRF 6



125-130 LM/W

WATTAGE 40W - 50W

LUMENS 500 - 6,250 lumens

OPTICS 15° / 30° / 60°



### CL PLC 9

80 LM/W

WATTAGE 9W - 24W

LUMENS 720 - 1920 lm

OPTICS 110°

CUTOUT Ø 130 - 215 mm



### CL PLC 8

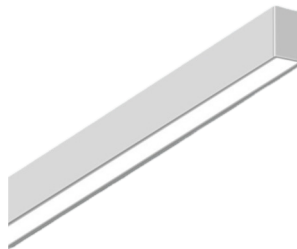
80 LM/W

WATTAGE 5W - 24W

LUMENS 330 - 1920 lm

OPTICS 110°

CUTOUT Ø 75 - 215 mm



### CL AR 10



110 LM/W

WATTAGE 20W - 80W

LUMENS 200 - 8000 lumens

OPTICS ~110.6° 25%up/75%down



### CL AR 9



125 LM/W

WATTAGE 24W - 100W

LUMENS 3000 - 12500 lm

OPTICS 110°



### CL AR 8

125 LM/W

WATTAGE 20W - 80W

LUMENS 2500 - 10000 lm

OPTICS 24° / 36° / 45° / 110° / 120°



### CLEWDQ

LUX 3000 lux / 3m

CCT 2500-10000K

OPTICS 90°

DIMENSIONS 1170 x 1170 mm



### CLEWDM

LUX 3000 - 6000 lux / 3m

CCT 2500-10000K

OPTICS 90°

DIMENSIONS 570 x 274 mm



### CLEWDL

LUX 3000 lux / 3m

CCT 2500-10000K

OPTICS 30°

DIMENSIONS 1481 x 270 mm



### CLEWDC

LUX 2500 lux / 3m

CCT 2500-10000K

OPTICS 90°

DIMENSIONS Ø 605 mm



### CLSL9

90 LM/W

WATTAGE 3W

LUMENS 270 lm

OPTICS 120°



### CLSL8

90 LM/W

WATTAGE 3W

LUMENS 270 lm

OPTICS 120°



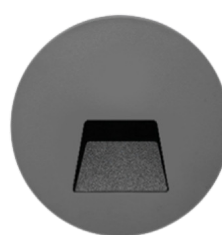
### CLSL7

90 LM/W

WATTAGE 3W

LUMENS 270 lm

OPTICS 120°



### CLSL6

90 LM/W

WATTAGE 3W

LUMENS 270 lm

OPTICS 120°





### CL SL 5

90 LM/W

WATTAGE 6W

LUMENS 600 lm

OPTICS 120°



### CL SL 4

90 LM/W

WATTAGE 3W

LUMENS 270 lm

OPTICS 120°



### CL TRPE

90 LM/W

WATTAGE 12W / M - 600W

LUMENS 1000 - 54000 lm

OPTICS —



### CL TRPR

90 LM/W

WATTAGE 5W/M

LUMENS 2950 lm

OPTICS —



### CL TRPP

90 LM/W

WATTAGE 12W / M - 600W

LUMENS 1000 - 54000 lm

OPTICS —



### CL TRPI

118 LM/W

WATTAGE 5W/M

LUMENS 2950 lm

OPTICS 120°



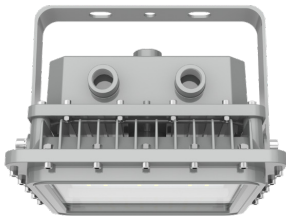
SECTION 07 · HAZARDOUS LOCATIONS

# Hazardous Locations.

Fixtures certified for explosive atmospheres: flammable gases, vapors and dusts. UL and IECEx compliance.

TECHNICAL SUBFAMILIES

<b>HZA</b>	<b>Type A</b> General floodlight	1
<b>HZB</b>	<b>Type B</b> Compact floodlight	1
<b>HZES</b>	<b>EXIT Sign</b> Emergency signage	1
<b>HZSTA</b>	<b>Standard</b> General industrial	1
<b>HZFLC</b>	<b>Flood Compact</b> Chemical processes	1
<b>HZFLF</b>	<b>Flood Full</b> Industrial plants	—
<b>HZCLR</b>	<b>Clear</b> Extreme visibility	—
<b>HZHB</b>	<b>High-bay HZ</b> Explosive process plants	1



### CLHZ A

140 LM/W



WATTAGE	60W - 200W
LUMENS	2720 - 28000 lm
OPTICS	40°/60°/90°/120°



### CLHZ HB

140 LM/W



WATTAGE	80W - 300W
LUMENS	19000 - 38000 lm
OPTICS	T3 Opcional T2, T4 y T5



### CLHZ B

140 LM/W



WATTAGE	20W - 200W
LUMENS	3023 - 28000 lm
OPTICS	40°/60°/90°/120°



### CLHZ H

140 LM/W



WATTAGE	20W - 80W
LUMENS	2800 - 11200 lm
DIMENSIONS	2FT / 4FT



### CLHZ G

140 LM/W



WATTAGE	20W - 30W
LUMENS	2000 - 3000 lm
OPTICS	120°



### CLHZ FLC

140 LM/W



WATTAGE	30W - 80W
LUMENS	3900 - 10400 lm
OPTICS	60°/90°/120°



### CLHZ FL

140 LM/W



WATTAGE	10W - 150W
LUMENS	200 - 21000 lumens
OPTICS	simétrico floodlight 60° / ...



### CLHZ STA

140 LM/W



WATTAGE	20W - 200W
LUMENS	3023 - 28000 lm
OPTICS	40°/60°/90°/120°



### CL HZ ES 9

54 LM/W



LEGEND	EXIT
VOLTAGE	120-277VAC
BACKUP TIME	90 MINUTES
WATTAGE	15W
LUMENS	810 - 1080 lumens



### CL HZ I

140 LM/W



WATTAGE	20W - 120W
LUMENS	2,800 - 16,800 lumens
OPTICS	Asymmetric linear



### CL HZ FLA

130 LM/W



WATTAGE	20W - 200W
LUMENS	200 - 26000 lumens
OPTICS	T5



### CL HZ CPA

140 LM/W



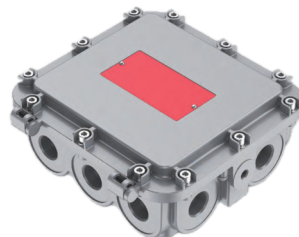
WATTAGE	40W - 150W
LUMENS	5,600 - 21,000 lumens
OPTICS	Canopy



### CL HZ JB 8



MATERIAL	Copper-free die-cast alumi
HAZ-LOC RATING	Class I Div 1/2 · ATEX
IP / IK	IP66 / IK10
HUB ENTRIES	4 entries (loop-in/out)



### CL HZ JB 9



MATERIAL	Copper-free die-cast alumi
HAZ-LOC RATING	Class I Div 1/2 · ATEX
IP / IK	IP66 / IK10
HUB ENTRIES	10 entries multi-side



SECTION 08 · EMERGENCY

# Emergency Lighting.

Standalone systems for evacuation and backup.  
Egress safety code compliance.

TECHNICAL SUBFAMILIES

**EM 1-4**

**Lamps**  
Backup lighting

**EM 5-9**

**EXIT Signs**  
Evacuation signage



### CLEM10

LEGEND	EXIT
VOLTAGE	120 - 277 VAC
BACKUP TIME	90 minutes



### CLEM9



LEGEND	EXIT
VOLTAGE	120-277VAC
BACKUP TIME	90 MINUTES
WATTAGE	2.4W - 3W



### CLEM8

LEGEND	EXIT
VOLTAGE	120-277VAC
BACKUP TIME	90 MINUTES



### CLEM7



LEGEND	EXIT
VOLTAGE	120-277VAC
BACKUP TIME	90 MINUTES



### CLEM5



LEGEND	EXIT
VOLTAGE	120-277VAC
BACKUP TIME	90 MINUTES
WATTAGE	1W



### CLEM4



33 LM/W

WATTAGE	2x.5 / 400 lumens
VOLTAGE	120-277VAC
BACKUP TIME	90 MINUTES
LUMENS	400 lumens



### CLEM3



88.9-177.8 LM/W	
WATTAGE	3W / 400- 800 lumens
VOLTAGE	120-277VAC
BACKUP TIME	90 MINUTES
LUMENS	400 - 800 lumens



### CLEM2

37.5-40 LM/W

WATTAGE	1.5W - 3W
VOLTAGE	120-277VAC
BACKUP TIME	90 MINUTES
LUMENS	150 - 300 lumens

REGULATORY COMPLIANCE

# Certifications & applicable standards.

Every Carden product meets the certifications applicable to its family and market. SKU-specific certifications are documented in each individual datasheet.

## NOM

MEXICO

### Norma Oficial Mexicana

Mexican regulatory framework for electrical safety. Applicable to products commercialized in Mexico.

## UL

UNITED STATES

### Underwriters Laboratories

North American certification ensuring electrical safety and durability. Internationally recognized.

## DLC

NORTH AMERICA

### DesignLights Consortium

List of high-efficiency LED products eligible for incentive and rebate programs in the US and Canada.

## IECEX

INTERNATIONAL

### International Electrotechnical Commission

Global certification for explosive atmospheres per IEC standards. Enables compliance across multiple countries.

## IP65 / IP66 / IP67

INTERNATIONAL

### Ingress Protection

Protection levels against dust and water. Carden offers IP65 to IP67 according to family and application.

## IK08 / IK10

INTERNATIONAL

### Impact Protection

Mechanical impact resistance. IK10 is the maximum rating, applied in urban and roadway fixtures.

## CE

EUROPE

### Conformité Européenne

Mandatory mark indicating compliance with European health, safety and environmental directives.

## FCC

UNITED STATES

### Federal Communications Commission

Electromagnetic emission compliance. Required for connected electronic products in the US.

## RoHS

INTERNATIONAL

### Restriction of Hazardous Substances

Restriction on hazardous substances in electrical and electronic equipment. Mandatory industry standard.

APÉNDICE

# Technical glossary.

Términos y unidades empleadas a lo largo del catálogo, con su correspondencia en inglés y una definición funcional aplicada a iluminación LED.

**Beam Angle** · Beam Angle

Spread of the emitted light beam. A narrow angle concentrates light on a point; a wide one distributes it across a larger area.

**Dimmable** · Dimmable

Ability to regulate light intensity, either to save energy or create different ambiances.

**Battery** · Battery

Stores electrical energy to power the fixture, especially in solar models. Its capacity determines nighttime runtime (Wh).

**CRI** · Color Rendering Index

Value between 0 and 100 measuring how accurately a fixture reproduces real colors. High CRI (>80) provides better visibility and visual comfort.

**CCT** · Correlated Color Temperature

Light tone measured in Kelvin (K): warm (3000K), neutral (4000K) or cool (6000K). Affects visual perception and space ambiance.

**Driver** · Driver / Controller

Component regulating electrical flow to the LEDs to maintain stable performance and protect against surges.

**Efficacy** · Luminous Efficacy

Ratio of light output (lumens) to energy consumption (watts). Higher efficacy means more light per watt consumed.

**Power Factor** · Power Factor

Measures how efficiently a fixture uses electrical energy. A factor close to 1 (e.g. 0.95) indicates efficient consumption.

**Luminous Flux** · Luminous Flux

Total amount of visible light emitted by the fixture, measured in lumens (lm).

**Input Frequency** · Input Frequency

Number of cycles per second (Hz) at which AC current feeds the fixture. Typically 50 or 60 Hz.

**IK Rating** · Impact Protection

Measures the mechanical impact resistance of the fixture body. The higher the number (IK08, IK10), the more resistant.

**IP Rating** · Ingress Protection

Protection code against dust and water. IP65 means full dust tightness and resistance to water jets.

**Lumens** · Lumens

Unit measuring the total amount of visible light emitted by a light source.

**lm/W** · Lumens per Watt

Energy efficiency indicator: how many lumens the fixture generates per watt consumed.

**L70** · L70 Lifetime

Hours of operation after which luminous flux drops to 70% of original. Standard indicator of LED service life.

**Wattage** · Wattage

Amount of electrical energy consumed by the fixture, expressed in watts (W).

**Service Life** · Service Life

Estimated total reliable operation time, often expressed in hours (e.g. 50,000 h) under nominal conditions.

**Hazardous Locations** · Hazardous Locations

Zones with potential presence of flammable gases, vapors or dusts. Require explosion-proof certified fixtures.

NEXT STEP

# A Bright Future Together.

Every project is different. Our technical team supports you from specification through delivery and commissioning.

INTERNATIONAL HEADQUARTERS

## Carden Lighting

International Manufacturer  
of LED lighting

Operating presence in Mexico,  
USA and Latin America.

SALES · QUOTES

## Sergio Cardenas

Email: [sergio@cardenltg.com](mailto:sergio@cardenltg.com)  
Phone: +52 81 1240 3690  
Web: [cardenltg.com](http://cardenltg.com)

Monday to Sunday · 24 hours

HOW TO QUOTE

- 01 Identify the SKU or application**  
Use the family index or alphabetical list to locate the specific product or family covering your application.
- 02 Request the full datasheet**  
For detailed specifications, photometrics, dimensions and IES files, request the individual SKU datasheet.
- 03 Request a formal quote**  
Provide volume, timeline, delivery location and specific requirements. You will receive a quote with real lead time and shipping options.
- 04 Project technical consulting**  
For tenders, site surveys or photometric calculations: schedule a technical session with our engineering team.